



DIPLOMA OF MENTAL HEALTH

Chisholm
RTO number 0260

 **CINEC**
CAMPUS
Beyond A Graduate



About Chisholm

We're pleased that you're thinking about joining us on your education and career path, and hope that this course guide will help you discover why around 40,000 students each year choose to study with us.

At Chisholm, we're proud of providing quality and industry relevant education that changes lives and communities, and keeps up with the many rapid changes taking place in the world. We offer a range of qualifications from certificates to degrees, as well as short courses

and pathways to skill you, inspire you and prepare you for a lifelong career. Our partnerships with universities, industry and the community give you options, as does our government funded cutting edge training facilities and scholarships for eligible students. At Chisholm, we're creating education for the future.

We hope you'll join us

Diploma of Mental Health CHC53315

This course is offered by Chisolm Institute, Australia in affiliation with CINEC Campus, Sri Lanka. It is designed to prepare you for employment in the field of mental health. This program covers all aspects of the role of a mental health professional who provide recovery oriented support for people with mental illnesses and psychiatric disabilities. You will also learn how to implement community based programs and activities related to mental health, mental illnesses and psychiatric disabilities.

Our Mental health program is structured with a strong emphasis on the skills and knowledge you need to work as a mental health

professional in providing mental health services. Also, Your legal and ethical responsibilities as a mental health professional will also be covered.

You will get hands on experience in working with people in a range of contexts such as community based non-government organizations, home based outreach, and center based programs, respite care, residential services, rehabilitation programs, clinical settings and organizational/work settings.

This program will support you to develop your academic skills and encourages active learning by engaging with relevant and contemporary issues. You will also develop soft skills needed to support people with mental health issues.

Areas of study



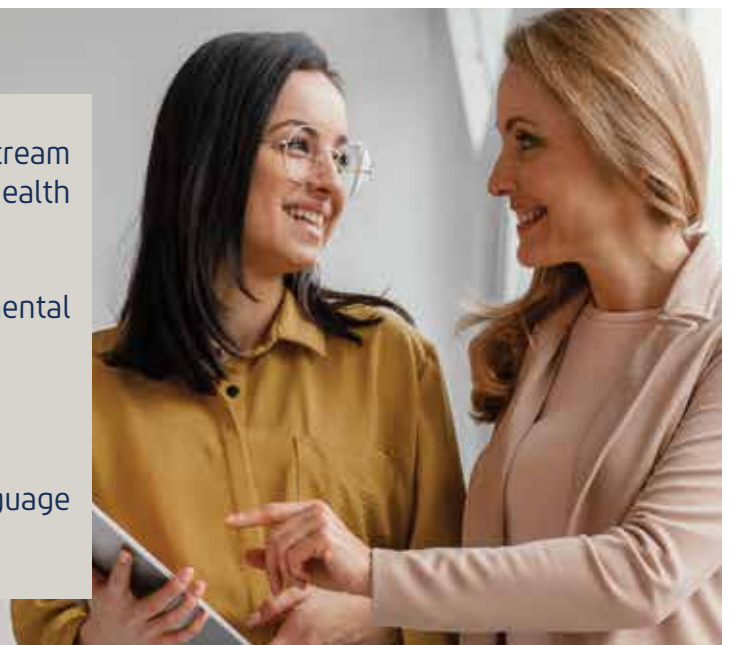
Entry requirements

GCE A/L or equivalent: one pass / "S" from any stream of study and completion of the CINEC mental health foundation program.

Only have GCE O/L: completion of the CINEC mental health foundation program.

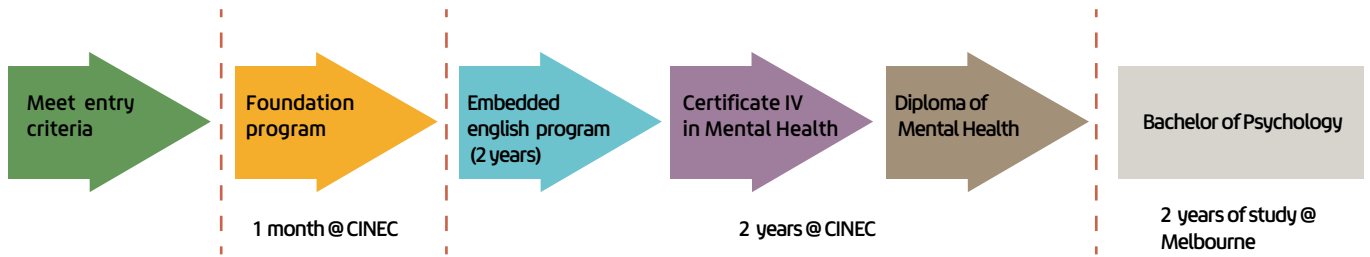
English requirement :

A minimum of GCE (O/L) pass / "S" for English language subject or equivalent



Duration: 2 Years

Choose your pathway



Job opportunities

With Diploma of Mental Health & Bachelor of Psychology



- > Mental health outreach professional
- > Psychosocial rehabilitation professional
- > Mental health professional
- > Dual diagnosis practitioner



- > Welfare coordinator
- > Refugee liaison officer
- > Community rehabilitation and support professional



- > Sports psychologist



- > Marketing behaviour specialist
- > Public relations specialist
- > Organisational psychologist



- > Child development specialist
- > Educational psychologist



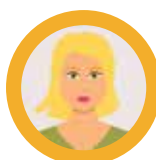
- > Forensic psychologist
- > National security analyst
- > Intelligence officer

With postgraduate studies & training



- > Clinical psychologist

“Australia will have a **shortage of 18,500 mental health professionals in 2030**”



“One of the rapidly **emerging medical professions in Sri Lanka is mental health**”



There are lots of great reasons to choose a diploma to degree pathway.

Some students, like Jenna, use a diploma as a pathway if they haven't met the entry requirements to go straight into a degree.

A degree pathway also allows you to work in the industry sooner so you can study while working part time – sometimes with financial or other support from the employer. It can be more cost-effective to complete a diploma than the first year of a degree. When completing a pathway, you'll gain more than one qualification and mix vocational and academic learning. A vocational qualification is more hands-on and interactive, while a bachelor degree builds on that and provides academic knowledge – so you, and your employer get the best of both worlds!



FAQs

Can you do a degree after TAFE diploma?

Absolutely. TAFE enables you to use your vocational qualification as a pathway to gain entry into a bachelor degree by setting you up with the study skills to excel.

Is my education investment safe with Chisholm?

Yes. Chisholm is a government owned public institution. We operate under the strict legislative rule of the government and continuously monitored by the Australian Standards and Quality Authority (ASQA). Because we are government owned, we are guaranteed by the government. Therefore, your testamur will never become invalid.

What is the difference between a university diploma and Chisholm diploma?

Diplomas currently in the Sri Lankan higher education market are foundation studies-based diplomas. Which means, if a student does not meet the minimum entry requirement to enter into a university degree, they can undertake a diploma to meet the entry criteria. These diplomas are only a “paper qualification” recognised by the particular university which the foundation studies are attached to.

Chisholm diplomas are fully industry accredited and globally recognised vocational qualifications. Chisholm diplomas enable a the diploma holder to be a trade professional and to be employed in their respective field.

Is there an industry placement during the diploma?

Yes. There is a 160hrs of compulsory industry placement during your studies. CINEC will find and organise this placement for you.

Can I work as a mental health professional after I receive my diploma?

Yes, you can. Diploma of Mental Health is an industry accredited vocational qualification. This enable you to work in the industry. The Uniqueness of Chisholm’s offer is, that while you are studying for Bachelor of Psychology degree, you may be able to work as a mental health professional because you are qualified with the Diploma of Mental Health.

How can I become a clinical psychologist?

To become a clinical psychologist, you need to undergo eight years of studies and training. Your Diploma and Bachelor of Psychology degree is the first step of this journey. Upon completion you will need to undertake postgraduate level of studies and clinical training. Once you complete all these, you will become eligible to practice as a clinical psychologist.

Our endorsements

At Chisholm, we work in conjunction with many regulatory bodies, complying with all relevant legislation. Our programs are conducted in line with the expectations of one or more of the following:



Our training is delivered with Victorian and Australian Government oversight. This means that we work in conjunction with the state government to ensure that the education we provide suits the needs of the state and local communities.



Chisholm is a Registered Training Organisation (RTO) and provides Nationally Recognised Training (NRT). Our training will provide you with a qualification that is recognised and respected across Australia.



Australian Government
Australian Skills Quality Authority

Registration with key governing bodies such as the Australian Skills Quality Authority ensures that Chisholm complies with Australian Government requirements, as well as operating in a way that benefits students and provides them with quality education.



Victorian Registration & Qualifications Authority

This is the Victorian Government organisation that regulates to ensure provision of quality learning outcomes in safe and well governed environments. We work closely with VRQA to ensure we are performing to the highest standards.



Australian Government

Tertiary Education Quality and Standards Agency

TEQSA is Australia's independent national regulator of the higher education sector. Our degree programs are designed to meet the rigorous TEQSA standards that also apply to Australian universities.



CINEC Campus

CINEC Campus (Pvt) Ltd is one of Sri Lanka's largest non-state sector higher education institutions situated in the picturesque suburbs of Malabe, in close proximity to Sri Jayawardenapura, the administrative capital of Sri Lanka.

CINEC Campus was established in 1990 with the vision of building close working partnership with the industry, the professional organizations and other stakeholders to serve in the best interest of its clients and customers. It has branches in Nugegoda, Trincomalee and Jaffna, all leading to highly sought-after opportunities of employment in the fields of Maritime, Engineering & Technology, Management, Logistics, Marketing & Branding, Supply Chain, Tourism & Hospitality, Law,

English, Education, Health Sciences, Information Technology, Aviation and Finance.

The institute is one of the most modern and sophisticated learning campuses in the Asia-Pacific region. It is fully equipped with modern classroom facilities, advanced laboratory facilities, technical workshops and state-of-the-art simulators. The campus is also equipped with residential facilities, cafeteria, swimming pool, gymnasium and other allied facilities for the use of students and guests and as such is considered a high ranking educational institution in Sri Lanka.

The courses are taught by lecturers who are well qualified with postgraduate degrees and with several years of industrial experience.

 **22,000**
Annual Student Registrations

 **Over 200**
Study Programmes

 **ISO 9001:2015**
Quality Management System Certification

 **14** National & International
Awards

 **6** Faculties

 **10** University Affiliations

 **3** Research Centres

 **Highest**
UGC Approved Degree
Awarding Pvt Ltd Institute

 **100%**
Graduate Employment Rate

Faculty of Health Sciences
 **070 6 474 536**

Millennium Drive, IT Park, Malabe, Sri Lanka.

T: + 94 11 4 486 400 | E: info@cinec.edu | W: www.cinec.edu